



INDIAN NOTICES TO MARINERS



EDITION NO. 20 DATED 16 OCT 2021

(CONTAINS NOTICES 188 TO 193)

REACH US 24 x 7



msis-inho@navy.gov.in
inho@navy.gov.in



+91-135-2748373



National Hydrographic Office
107-A, Rajpur Road
Dehradun – 248001
INDIA



Commander (H)
Maritime Safety Information Services
+91- 135 - 2746290-117

WWW

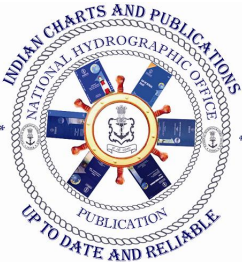
www.hydrobharat.gov.in

CONTENTS

<u>Section No.</u>	<u>Title</u>
I	List of Charts Affected
II	Permanent Notices
III	Temporary and Preliminary Notices
IV	Marine Information
V	NAVAREA VIII Warnings in force
VI	Corrections to Sailing Directions
VII	Corrections to List of Lights
VIII	Corrections to List of Radio Signals
IX	Corrections to Miscellaneous Nautical Publications
X	Reporting of Navigational Dangers

(PUBLISHED ON NHO WEBSITE ON 1ST & 16TH OF EVERY MONTH)

FEEDBACK: msis-inho@navy.gov.in



INSIST ON INDIAN CHARTS AND
PUBLICATIONS
Original, Authentic and Up-to-Date



© Govt. of India Copyright

No permission is required to make copies of these Notices. However, such copies are not to be commercially sold.

II

MARINER'S OBLIGATION AND A CHART MAKER'S PLEA

Observing changes at sea proactively and reporting them promptly to the concerned charting agency, is an obligation that all mariners owe to the entire maritime community towards SOLAS. Mariners are requested to notify the Chief Hydrographer to the Government of India at the above mentioned address/fax number/ E mail address immediately on discovering new or suspected dangers to navigation, changes/ defects pertaining to navigational aids, and shortcomings in Indian charts/ publications. The Hydrographic Note [Form IH – 102] is a convenient form to notify such changes. Specimen form is attached at Section IX with this notice. Also visit our website for downloading and filling up instructions for Hydrographic Note.

**Chief Hydrographer
to the Government of India**

WARNING AGAINST USE OF COUNTERFEIT PRODUCTS

All mariners are cautioned against the use of counterfeit copies of IN Charts and publications. Navigational Charts produced after 31 Oct 14 carry NHO crest as watermark on the reverse with backslip. Chart Agent's stamp is mandatory on all Charts.

Counterfeit products may have errors resulting in potential risks. The same are not approved by inspecting agencies and do not satisfy the carriage requirements of SOLAS chapter V.

Mariners are strongly advised not to use or encourage the use of counterfeit charts and publications. Failure to comply with the warning may invite legal action.

III

EXPLANATORY NOTES

Corrections to Charts and Publications. Section I comprises List of Charts affected by the notices contained in this edition. Whereas sections II and III contain information for correcting the charts and publications. Mariners should insist on corrected charts from their chart distributors/agents.

- (a) Geographical positions given are in the horizontal datum of the current edition of the chart, unless otherwise stated.
- (b) Bearings are true, reckoned clockwise from 000° to 359°. Bearings to lights are from seaward.
- (c) Symbols referred to, are those shown on the chart 5020 (INT 1).
- (d) Alterations to depth contours, deletion of depths to make way for new detail, etc; are not normally mentioned, unless they have some navigational significance.
- (e) Blocks and notes, if any, accompanying the Notices in Sections II and III are placed after Section IX.

Temporary and Preliminary Notices. These are indicated by (T) and (P) respectively after the Notice number and are placed in Section III. SI Nos. of those in force are published quarterly on 01 Jan, 01 Apr, 01 Jul and 01 Oct, and their text is published in Annual Edition of Indian Notices to Mariners. They should be inserted in pencil, by the user, on receipt.

Source of Information. A star preceding the number of a Notice indicates that the notice is promulgated by INHO based on original information received.

Sailing Directions. Corrections for the Sailing Directions (Pilots) are given in Section VI.

Lights. Corrections to Indian List of Lights are given in Section VII, where affected Light List number is quoted.

- (a) These corrections should be incorporated as per instructions given on page XI of the List of Lights.
- (b) Such correction notices to list of lights may be published in either an earlier or a later Edition of N to M than the Edition containing the Notice to the chart correction.
- (c) The range of a light given is its nominal range. Its geographical range is given in parenthesis only if it is less than the nominal range.
- (d) A star indicates that the corresponding field is to be amended and all stars indicate that new light is to be inserted.

Radio Signals. The corrections in Section VIII should be cut and pasted in the appropriate volume of the List of Radio Signals.

Radio Navigational Warnings.

- (a) These are broadcast as serially numbered NAVAREA warnings by the concerned NAVAREA coordinator through GMDSS and Area Radio Broadcasts.
- (b) They contain important information affecting navigational safety, which cannot await the publication of the next edition of N to M.
- (c) It should be borne in mind that they may be based on reports which cannot always be verified before promulgation.
- (d) It is therefore necessary to be selective, and promulgate only the more important warnings to avoid over loading users; the less important information is included in the forthcoming edition of N to M or the Chart/Publication concerned.

IV

Laws and Regulations. While in the interest of the safety of shipping, the Hydrographic Office makes every endeavor to include in its publications details of the laws and regulations of all countries pertaining to navigation, it must be clearly understood: -

- (a) That no liability whatsoever can be accepted for failure to publish details of any particular law or regulation and
- (b) That publication of details of a law or regulation is solely for the safety and convenience of shipping and implies no recognition of the International validity of the law or regulation.

Correction of Charts and Publications by the Users. Notices to Mariners contain important information concerning safety of navigation at sea, hence, they should be used to keep the specified charts and publications up-to-date.

Reliance on Charts and Associated Publications. While every effort is made by the Hydrographic Office to ensure the accuracy of the information on Charts and Publications before they are published, it should be appreciated that it may not always be complete and up-to-date. The mariner must be the final judge for the reliance he can place on the information available, bearing in mind his particular circumstances, local pilotage guidance and judicious use of available navigational aids.

Use of Global Positioning System (WGS 84) positions.

- (a) The positions of hydrographic objects shown on some of the Indian charts and publications are in Everest datum. However, the positions of vessels obtained from Global Positioning System (GPS) are on World Geodetic System 1984 datum. There will always exist difference in the position values obtained by visual fixing (Everest Datum) and GPS position (WGS 84 datum).
- (b) Wherever these differences have been ascertained, their average values are published as a Cautionary Note on the chart concerned, as shifts in Latitude and Longitude. Whilst plotting GPS positions on charts, the shift values as given on the chart must be applied, before making any assessment of the navigational situation vis-à-vis the other charted information.
- (c) These datum shift values are not uniform, particularly in areas off Andaman and Nicobar and Lakshadweep Islands, as these places are not linked to mainland network (Everest datum). Mariners are advised to use alternate source of position information such as Visual or Radar, particularly when closing the shore or navigating in the vicinity of dangers.

Source Data on Charts. All Indian charts contain specific information on their source of hydrographic data. In areas where the source data is very old, incomplete and less reliable, the mariner must use such charts with prudence. Mariner should always use the largest scale charts available for the area. Apart from being the most detailed, the larger scale charts are usually corrected first. Hydrographic information may be sparse on small scale charts. On such charts, a charted shoal may be in error as regards position, least depth and extent. Uncharted dangers may also exist, particularly in areas away from well-established routes. Mariners must exercise due caution.

Further Guidance. The Mariner's Hand Book (NP 100) gives full explanation on the use of charts and the type of information contained on charts. In their own interest, all users of charts should refer to it.

NEWLY PUBLISHED INDIAN CHARTS, ENC'S AND PUBLICATION

1. The new Indian Chart that is available for mariners in the market is as follows:-

<i>Chart No.</i>	<i>Date of Publication</i>	<i>Title, Limits & Description</i>	<i>Scale</i>	<i>Folio</i>	<i>Price</i>
2599	15-09-2021	MALE ATOLL LIMIT 04° 08.70N; 73° 21.70E. 04° 17.50N; 73° 35.00E.	25,000	1	Rs. 1950.00

2. The new edition Indian Charts that is available for mariners in the market is as follows: -

<i>Chart No.</i>	<i>Date of Publication</i>	<i>Title, Limits & Description</i>	<i>Scale</i>	<i>Folio</i>	<i>Price</i>
NIL					

3. The Indian Charts that is permanently withdrawn is as follows: -

<i>Chart No.</i>	<i>Date of Publication</i>	<i>Title</i>	<i>On Publication of New Chart/ Edition</i>	<i>Date of Publication</i>
2099	31-12-2013	MALE ATOLL	2599	15-09-2021

4. The new Indian Electronic Navigational Chart that is available for mariners in the market is as follows:-

<i>ENC Cell Name</i>	<i>Chart No.</i>	<i>Title</i>	<i>Issue Date</i>
IN52599M	2599	MALE ATOLL	11-10-2021

5. The new edition Indian Electronic Navigational Chart that is available for mariners in the market are as follows:-

<i>ENC Cell Name</i>	<i>Chart No.</i>	<i>Title</i>	<i>Issue Date</i>
IN42039K	2039	GULF OF KHAMBHAT NORTHERN PORTION	11-10-2021
IN52082H	2082	APPROACHES TO DAHEJ	12-10-2021
IN42100D	2100	APPROACHES TO PORT PIPAVAV	12-10-2021
IN62100B	2100	PORT PIPAVAV	12-10-2021
IN62110B	2110	DAHEJ HARBOUR	12-10-2021

VI

6. The Indian Electronic Navigational Chart that is permanently withdrawn are as follows:-

<i>ENC Cell Name</i>	<i>Chart No.</i>	<i>Title</i>	<i>Issue Date</i>
IN42039K	2039	GULF OF KHAMBHAT NOTHERN PORTION	07-07-2021
IN52082H	2082	APPROACHES TO DAHEJ	09-02-2017
IN52099M	2099	MALE ATOLL	21-10-2019
IN42100D	2100	APPROACHES TO PORT PIPAVAV	25-07-2018
IN62100B	2100	PORT PIPAVAV	25-07-2018
IN62110B	2110	DAHEJ HARBOUR	06-10-2016

7. The forthcoming Indian Charts are as follows: -

<i>Chart No</i>	<i>Title</i>	<i>Scale</i>	<i>Remarks</i>
203	GULF OF KACHCHH	1,50,000	NEW EDITION
209	HAZIRA TO UMARGAM	1,25,000	NEW EDITION
252	OKHA TO VERAVAL	3,00,000	NEW EDITION
271	APPROACHES TO GULF OF KACHCHH	5,00,000	NEW EDITION

Availability of ENCs

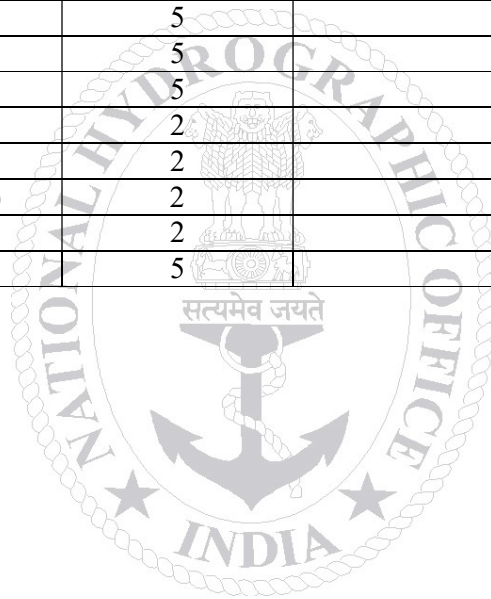
The complete folios of Official Indian ENCs are distributed worldwide through JEPPESEN MARINE (formerly C-MAP), UKHO and Norwegian Hydrographic Service. UKHO distributes Indian ENCs through the Worldwide network of their agents and distributors. Updates are also made available as per the existing policy of the distributor. Mariners and other ENC users may contact the under mentioned for further details:

United Kingdom Hydrographic Office Admiralty Way, Taunton, Somerset TA1 2DN, UK Tel : +44 (0) 1823 337900 Fax : +44 (0) 1823 330561, 1823 284077 Web site : www.hydro.gov.uk	M/s IIC Technologies Limited B-2-350/5/B-22, Road No. 3 Banjara Hills, Hyderabad - 500 034 Telangana Tel: +91 4039144444 Fax: +91 4039144455 Email: somnath.marthi@iictechnologies.com Web: www.iictechnologies.com
M/s Primar Norwegian Hydrographic Service, Postbox 60, 4001 Stavanger Norway Telephone - +47 - 51 85 87 00 Fax - + 47 - 51 85 87 08 E-mail: data@ecc.no Website: - www.primar.org	

SECTION – I

The list of charts affected by the Notices 188 to 193 contained in this edition is as follows:-

CHART NUMBER	FOLIO NO.	NOTICE NO.
31(INT 756)	5	190, 193(T)
202	2	191(T)
210	3	191(T)
211	3	191(T)
251 (INT 7318)	2	191(T)
253 (INT 7328)	2	191(T)
254 (INT 7331)	3	191(T)
255 (INT 7334)	3	191(T)
256 (INT 7340)	3	191(T)
271	2	191(T)
292 (INT 7021)	2	191(T)
293 (INT 7022)	3	191(T)
354 (INT 7408)	5	192(T)
355 (INT 7405)	5	192(T)
391	5	192(T)
2039	2	188
2082	2	188
2100 (INT 7344)	2	189
2110	2	188
3042	5	192(T)



SECTION – II
PERMANENT NOTICES

***188 (20/21) INDIA – WEST COAST – GULF OF KHAMBHAT – Dahej Harbour – Accompanying Block.**

Source: NHO, Dehradun.

Chart 2039 [previous update 142/21]

Insert accompanying block, centered on; 21° 39.00'N., 072° 33.75'E.

Chart 2082 [previous update 142/21]

Insert accompanying block, centered on; 21° 39.75'N., 072° 33.65'E.

Chart 2110 [previous update 142/21]

Insert accompanying block, centered on; 21° 39.75'N., 072° 33.56'E.

***189 (20/21) INDIA – WEST COAST – GULF OF KHAMBHAT – Approaches to port Pipavav – Accompanying Block.**

Source: NHO, Dehradun.

Chart 2100 (INT 7344) [previous update 166/20]

Insert accompanying block, centered on; 20° 55.40'N., 071° 30.60'E.

Chart 2100 (INT 7344) (Port Pipavav) [previous update 166/20]

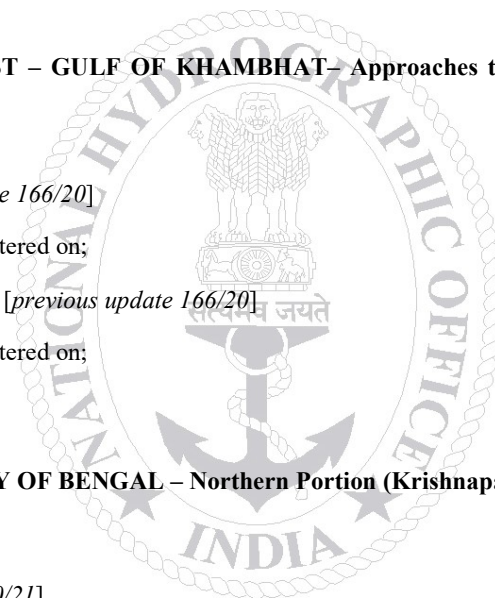
Insert accompanying block, centered on; 20° 55.24'N., 071° 30.63'E.

***190 (20/21) INDIAN OCEAN – BAY OF BENGAL – Northern Portion (Krishnapatnam to Bassein River) – Light.**

Source: BNHOC notice no 40/2021.

Chart 31 (INT 756) [previous update 160/21]

Amend Characteristics of light to, LFl.10s45m10M, centered at; 22° 10'·68N., 091° 49'·51E



Section – III**TEMPORARY AND PRELIMINARY NOTICES*****191(T) (20/21) INDIA – WEST COAST – Arabian Sea – Oil Rigs.**

Source: NCD, Mumbai.

1. List of Oil Rigs is as follows:-

Rig Name	Position
Aban III	19° 27'.35N., 71° 17'.94E.
Aban IV	19° 31'.84N., 71° 24'.92E.
CE Thornton	18° 32'.97N., 72° 18'.52E.
Discovery 1	19° 21'.10N., 71° 47'.20E.
DS Fossil	18° 43'.09N., 72° 19'.12E.
FG MC clintok	18° 34'.11N., 72° 13'.45E.
Foresight Driller IX	19° 12'.64N., 70° 56'.05E.
Great Drill Chaaru	18° 33'.72N., 72° 17'.66E.
Great Drill Chetna	20° 29'.65N., 71° 39'.68E.
Great Drill Chaaya	18° 51'.69N., 72° 50'.85E.
Jindal Explorer	18° 08'.20N., 72° 19'.98E.
Jindal Star	18° 37'.93N., 72° 14'.22E.
Jindal Supreme	19° 37'.97N., 71° 41'.39E.
JT Angel	18° 04'.38N., 72° 25'.99E.
Parameswara	20° 08'.62N., 71° 21'.27E.
Ron Tappmeyer	19° 11'.05N., 72° 11'.21E.
Sagar Jyoti	19° 43'.76N., 71° 31'.80E.
Sagar Kiran	18° 58'.72N., 71° 32'.45E.
Sagar Ratna	20° 06'.42N., 72° 15'.79E.
Sagar Shakti	18° 53'.27N., 71° 52'.53E.
Sagar Udhay	19° 33'.57N., 71° 43'.21E.
Trident 2	19° 42'.05N., 71° 37'.59E.
Valiant Driller	19° 34'.71N., 71° 23'.15E.
Vivekananda 1	19° 11'.99N., 72° 11'.00E.
Vivekananda 2	20° 14'.88N., 71° 57'.77E.
Virtue 1	19° 14'.62N., 70° 53'.04E.

2. All vessels operating in vicinity are to maintain a clearance of 01 NM off the oil rigs.

3. All positions referred to WGS 84 datum

Charts Affected – 292 (INT 7021) – 293 (INT 7022) – 271 – 251 (INT 7318) – 253 (INT 7328) – 254 (INT 7331) – 255 (INT 7334) – 256 (INT 7340) – 210 – 211 – 202.

Former INTM 186 (T)/21 is cancelled.

***192 (T) (20/21) INDIA – EAST COAST – Bay of Bengal – Oil Rigs.**

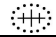
Source: NCD, Mumbai.

- List of Oil Rigs is as follows:-

Rig Name	Position
Aban II	16° 40'·40N., 82° 24'·29E.
DDKG 1	16° 32'·22N., 82° 33'·51E.
DS Fortune	16° 20'·50N., 81° 59'·37E.
SSV Louisiana	16° 00'·04N., 82° 22'·24E.
Olinda Star	16° 25'·18N., 82° 24'·15E.
Platinum Explorer	15° 05'·92N., 82° 06'·44E.

- All vessels operating in vicinity are to maintain a clearance of 01 NM off the oil rigs.
- All positions referred to WGS 84 datum.

Charts Affected – 391 – 354 (INT 7408) – 355 (INT 7405) – 3042.***Former INTM 184(T)/21 is cancelled.***

*193 (T) (20/21)	INDIAN OCEAN – Bay of Bengal – Northern Portion (Krishnapatnam to Bassein River) – Wreck.	
Source: BNHOC Notice no. 42(T)/2021.		
Insert		22° 14'·31N., 91° 46'·40E.
Charts Affected – 31(INT 756)		

SECTION – IV

MARINE INFORMATION

1. NAVTEX TRANSMISSION

Status of MSI Promulgation by NAVTEX Stations is as follows:-

Mauritius (Cassis)	- Operational
Seychelles (Mahe)	- Operational
Bangladesh (Kuakata)	- Operational

Following new NAVTEX stations along the Indian coast have commenced operations:-

INTERNATIONAL NATIONAL NAVTEX FREQUENCY - 518 kHz								
Sl.	Station Name	B1	Broad Cast Timings in UTC					
(a)	Veraval	H	0110	0510	0910	1310	1710	2110
(b)	Vengurla Point	J	0130	0530	0930	1330	1730	2130
(c)	Muttam Point	L	0150	0550	0950	1350	1750	2150
(d)	Porto Novo	O	0220	0620	1020	1420	1820	2220
(e)	Vakalpudi	Q	0240	0640	1040	1440	1840	2240
(f)	Balasore	S	0300	0700	1100	1500	1900	2300
(g)	Keating Point	V	0330	0730	1130	1530	1930	2330

2. MISIDENTIFYING FISHING BOATS AS PIRATE SKIFFS

All merchant vessels entering Indian EEZ are advised that dense fishing activity may be encountered off West Coast of India. Fishing is generally carried out by mechanized boats and single hull boats with outboard motors carrying 4-5 crews using long lines upto 50 NM from coast. The vessels traversing the nets are likely to be approached by fishing boats for safeguarding nets and lines and should not be mistaken as skiffs and PAG's. Masters of vessels to report any suspicious activity of fishing vessels immediately to MRCC (Mumbai) on telephone +91-22-24388065, 24316558, Email: - mrcc-west@indiancoastguard.nic.in. Any suspicious activity of skiffs/ boats to be photographed if possible. Merchant vessels with armed guards on board are to report presence of guards to Indian Navy/Coast Guard while transiting Indian EEZ.

3. DISPLAY ANOMALIES IN ECDIS

(a) Mariners are advised that the International Hydrographic Organization (IHO) check data set shows that some ECDIS systems fail to display some significant underwater features in the standard display mode. The use of this check data set, issued through ENC service providers and available from the IHO website www.iho.int, to check the operation of ECDIS is strongly recommended. JRC has confirmed that certain versions of JRC ECDIS fail to display some types of wreck and obstructions, including stranded wrecks, in any display mode. Where JRC ECDIS is in use, paper charts should be the primary means of navigation until the ECDIS has been proved to operate correctly. See www.jrc.co.jp/eng/product/marine/whatsnew/20120313/index.html for further information.

(b) Some Electronic Chart Display and Information Systems (ECDIS) may exhibit operating anomalies. The International Maritime Organization's (IMO) circular SN.1/CIRC.312 pages /imodocs.aspx (registration required) lists identified anomalies, Their characteristics and remedial advice. Mariners are reminded that they should access the International Hydrographic Organization (IHO) data presentation and performance check (DPPC) dataset (news links of <http://www.iho.int/srv1>) and ensure that all installed ECDIS units are checked.

4. **SAFETY FAIRWAYS, RECOMMENDED ROUTES, TRAFFIC SEPARATION SCHEME**

The Director General Shipping has established Safety fairways, recommended routes and traffic separation scheme (TSS) in restricted Indian waters including the offshore development area to enhance safety of navigation. The details of coordinates are published in the fortnightly Indian Notices to Mariners.

- (a) **Safety Fairways:** An area within which permits are not granted for the erection of oil or gas related structures. The use of a safety fairway is not usually mandatory, but is recommended. Safety fairways have been promulgated in and round offshore development area in Arabian Sea up to the Exclusive Economic Zone (EEZ) due to increased weather related marine accidents and dense traffic. These are mandatory for all Indian ships and vessels transiting through the ODA and recommendatory for all foreign flag ships and vessels irrespective of size.
- (b) **Traffic Separation Schemes (TSS):** The TSS is mandatory for all Indian and foreign flag ships and vessels entering and leaving.

5. **GAGAN SYSTEM COMMISSIONED FOR OPERATIONS**

The GAGAN System is now commissioned for safety of life, civil aviation, and en- route operations in addition to all other non-aviation applications. The GAGAN signal is being broadcasted through GSAT-8 and GSAT-10 with PRN127& 128 respectively. All the GPS users are requested to enable SBAS functionality in their receivers, configure it to receive PRN- 127& 128 and avail the benefits of GAGAN in terms of increased accuracy and reliability. There may be occasional signal outages due to system up-gradation activities.

6. **USAGE OF THURAYA/ IRIIDIUM AND SATELLITE PHONE**

- (a) The use of Thuraya, Iridium and other such satellite phone is banned in India under Sec 6 of Indian Wireless Act and Sec 20 of Indian Telegraph Act. It is intimated to all shipping companies/ shipping agents that use of Thuraya/ Iridium and other such satellite phones are banned in Indian waters and seafarers should not use the same.
- (b) Satellite phones can be used only after no objections certificate issued by department of telecommunication (DOT) on a case to case basis. The shipping agents should mandatorily intimate the details of person carrying Thuraya and the particulars of Thuraya, Iridium and other such sets in Pre Arrival Notification on Security (PANS).
- (c) The unauthorized holders of Thuraya/ Iridium and other such Satellite phones can be prosecuted under Sec 6 of Indian Wireless Act and Sec 20 of Indian Telegraph Act.

7. **CAUTIONARY NOTE**

There is a finite amount of lag between publication of large and small scale Indian Nautical Charts. To avoid uncertainty the mariners are advised to use large scale charts for coastal navigation wherever applicable and available. In addition, mariners are to refer large scale charts in conjunction with small scale charts in areas where both overlap during both planning and conduct of passage.

8. **ADVISORY FOR ALL VESSELS NAVIGATING INDIAN WATERS**

- (a) All vessels navigating in Indian waters are cautioned to keep a sharp look-out for fishing vessels and small crafts, as there have been several incidents of collisions with such vessels in the past resulting in loss of innocent lives as well as damage to property.
- (b) It is further cautioned that all vessels need to exercise extreme care while navigating during hours of darkness as such vessels are generally of primitive built (wood/fibre/etc) due to which it may not be detected on ship's radar, especially during adverse weather conditions. Also, such vessels may not be properly lit, or sometimes, only one vessel may be lit among multiple vessels in a cluster.
- (c) The general areas of concern on the west coast of India are the areas of convergence and divergence of traffic, mainly between Mangalore to Kanyakumari (Cape Comorin). Further, in these areas, additional caution needs to be exercised and wide berth be given to all such vessels.

(d) All fishing vessels are also cautioned to avoid fishing in areas having high density traffic. All fishing vessels are also required to always maintain proper lookout by sight, hearing and by all available means and comply with all applicable provisions of Collision Regulations.

List of Indian Chart Agents

<p>OSA Books and Periodicals R-246, Greater Kailash –I, New Delhi - 110 048 Tel/Fax: +91-11-26418643, 46557337, Mob: 9971093992 Email: rpani246@gmail.com</p>	<p>M/s VDO Marine Insrtuments Shanghar Building, PO Bag No – 645, 45/271, Corner of Bristow & Naval Road, Willingdon Island, Kochi – 682 003 Tel: +91 484 2667157 Fax: +91 484 2667121 Email: atmain@md4.vsnl.net.in</p>
<p>M/s Global Charts & Nav. Aids Pvt. Limited 1A, Goa Mansion, Ground Floor, 58, Dr. SunderlalBahl Path (Goa Street), Fort, Mumbai - 400 001 Tel: 91-22-22626318, 22626380 Fax: 91-22-22621488 Email: sales@globalcharts.in Web: www.globalcharts.com.sg</p>	<p>SMS Marine Private Ltd 505, Raheja Arcade, Sector 11, CBD Belapur, Navi Mumbai – 400 614 Tel: +91-22-62233326, Fax: 022-67939504 Mobile: +91 9820 238 542 Email: info@c-map.co.in , raj.chakravorty@smsmap.com Web: www.smsmaps.co.in</p>
<p>M/s C & C Marine Combine 25 Bank Street, 1st Floor, Fort Mumbai - 400 023 Tel: 91-22- 22660017/0018/0525/1937 Ext: 32 Tel: 91-22-22672143 Fax: 91-22-22670896 Email: vijay@ccmarine.in, sales@ccmarine.in</p>	<p>M/s Global Marine Infratech Pvt. Ltd. SikshaSandan, Ground Floor, Plot No. ND7, VIP Area, IRC Village, Bhubaneswar – 751015 Tel: +91-674-2550599, Fax: +91-674-2551899 Cell:- +91-9337477799, 7077702499 Email: tusarkantha@gmiindia.in Web: www.gmiindia.in</p>
<p>M/s JM Maritime Services 24/24C Kavarana Building, Ground Floor, WadiBunder, P.D. Mellow Road, Mumbai – 400 009 Tel: +91 22 23736956, Fax: 022 - 23725083 Cell: +91 9820788357 Email : jmms@mtnl.net.in , charts@mtnl.net.in</p>	<p>L. R. Marine Services 301, 3rd Floor, Biryra House, 265, PerinNariman Street, Fort, Mumbai - 400 001. Tel: +91-22-2269 1535, Fax: +91-22-66359148 Cell No: +91 8108926880/ +91 98214 60258 Email: lrcharts@gmail.com, lrmarine@live.com</p>
<p>M/s Lift o Marine Allen's Mansion, C6, Nungi Station Road, Bata Nagar, Kolkata – 700 140 Tel: +91 9836972027 Fax: 033 24924283 Email: sankar@liftomarine.org, liftomarine77@gmail.com Web: www.liftomarine.org</p>	<p>IIC Technologies Limited 8-2-350/5/B-22, Road No. 3, Banjara Hills, Hyderabad – 500 034, Telangana Tel: +91 40 39144444 Fax: +91 40 39144455 Email: somnath.marthi@iictechnologies.com Web: www.iictechnologies.com</p>
<p>M/s Zenith Surveys (I) Pvt. Ltd. Lakhani'sPlam View, First Floor, Office No. 889, Sector 48, Nerul, Navi Mumbai – 400 706 Tel/ Fax: +91-22- 27708011 Email: zenithsurveys703@gmail.com nyvmane@yahoo.com Web: www.zenithsurvey.com</p>	<p>M/s CNC Office No. S-12-92, Haware's Centurion Premises Coop. Soc. Ltd Plot no 88-91, Sector 19, NERUL, Navi Mumbai – 400706 Tel: +91 22 22660017/ +91 22 49747575 Cell No: +91 9920654848/ +91 7506097212 Email: sales@emariner.net</p>

SECTION – V**NAVAREA – VIII WARNINGS IN FORCE**

1. For details of NAVAREA limits and organisation/ coordination, please refer to Notice No. 12 of the Special edition of Indian Notice to Mariners – 2020.

2. NAVAREA VIII Warnings in force as on 16 Oct 21: -

2020 SERIES - 333 384 442 593 630 690 691 751 757
2021 SERIES - 017 147 286 340 361 387 392 411 420 433 434 447 463 478 479 480 491 493 494
500 528 540 544 550 601 604 606 614 629 633 642 644 658 660 664 667 671 674 677 687 688
690 694 695 698 700 701 702 703 705 706 707 708 709 710 711 712 713

3. NAVAREA VIII Warnings issued during the period from 01 Oct to 16 Oct 21 (both dates inclusive) are as tabulated below: –

<p>674. India East Coast - off Gopalpur. Charts IN 31 305 352 353 391 INT 7413. Army air defence firing scheduled from (A) 04 to 07 OCT (B) 11 to 14 OCT (C) 16 to 18 Oct (D) 20 to 23 OCT (E) 25 to 30 Oct 21 From 0130 to 0830 UTC and 0930 to 1430 UTC in danger area bounded by (A) 19-14.6N 084-53.7E (B) 19-07.39N 085-35.94E (C) 18-33.61N 084-53.74E and arc of 41 NM radius joining point B and C. Wide berth from area advised.</p> <p>2. Cancel this MSG 301530 UTC OCT 21.</p>
<p>675. Cancel NAVAREA VIII MSG 515/21, 668/21 and this MSG. INTM 184(T), section VII of 19/21 refers</p>
<p>676. NAVAREA VIII - warnings in force as on 01 Oct 2021</p> <p>2020 SERIES - 333 384 442 593 630 690 691 751 757</p> <p>2021 SERIES - 017 147 286 340 361 387 392 411 420 433 434 447 463 478 479 480 491 493 494</p> <p>500 528 540 544 550 601 604 606 614 627 629 633 642 644 648 652 658 660 664 667 669 670</p> <p>671 672 674 675</p> <p>(A) NAVAREA VIII warnings less than 42 days promulgated via safetynet</p> <p>(B) Text of NAVAREA VIII warning inforce including those which no longer broadcast available in www.hydrobharat.gov.in</p> <p>2. Cancel this MSG 081000 UTC Oct 21.</p>
<p>677. India West Coast. Charts IN 22 255 293 294 INT 752. Albatross 5 progressing cable route survey in area bounded by (A) 19-03.1N 072-35.29E, 18-56.31N 072-39.62E, 18-52.87N 072-34.71E, 19-01.98N 072-31.93E (B)18-54.5N 072-14.83E, 18-58.75N 072-28.32E, 18-52.68N 072-30.5E, 18-52.52N 072-20.07E (C) 13-37.01N 072-57.54E, 13-27.11N 072-37.78E, 15-37.86N 071-18.81E, 15-40.64N 071-43.76E, 17-16.75N 071-46.59E, 17-13.61N 072-02.99E (D) 18-48.04N 072-22.73E, 18-15.5N 072-15.9E, 18-18.53N 071-57.89E, 18-51.14N 072-03.88E (E) 18-15.05N 072-15.9E, 17-44.55N 072-09.44E, 17-47.46N 071-52.2E, 18-18.53N 071-57.89E (F) 17-44.55N 072-09.44E, 17-13.61N 072-02.99E, 17-16.75N 071-46.59E, 17-47.46N 071-52.2E.length of tow 250 meters from stern. Wide berth requested.</p> <p>2. Cancel this MSG 221830 UTC Oct 21.</p>
<p>678. India West Coast - off bhatkal. Charts IN 22 216 257 2356 INT 752. Firing scheduled on 05, 06, 07 OCT 21 from 0300 to 1230 UTC in area bounded by 14-03.4N 074-12.75E, 14-08N 074-22.75E, 13-57.7N 074-26.4E, 13-54.6N 074-16.5E.Wide berth from area advised.</p> <p>2. Cancel this msg 071330 UTC Oct 21.</p>
<p>679. India East Coast - off Balasore. Charts IN 31 351 352 3017 INT 756. Experimental flight trial scheduled on 06, 07, 08 OCT 21 FROM 0430 to 0630 UTC and 0830 to 1030 UTC in danger area bounded by 21-22.6N 086-56.32E, 21-21.98N 086-55.86E, 21-19.15N 086-54.48E, 21-06.95N 086-51.63E, 20-46.53N 087-07.2E, 20-18.66N 087-20.56E, 18-57.41N 086-46.86E, 19-03.33N 087-47E, 20-19.11N 088-18.4E, 21-28.55N 087-07.91E. Wide berth from area advised.</p> <p>2. Cancel this MSG 081130 UTC Oct 21.</p>
<p>680. India West Coast - off Mormugao. Charts IN 22 214 215 257 293 INT 752. Firing scheduled from 070230 to 071130 UTC Oct 21 in danger area bounded by 14-15N 072-52E, 14-20N 071-52E, 15-30N 071-48E, 16-09N 072-44.5E, 15-17N 073-21E.Wide berth from area advised.</p> <p>2. Cancel this MSG 071230 UTC Oct 21.</p>
<p>681. India East Coast - off chennai. Charts IN 32 313 356 357 391 INT 7400. Firing by cg aircraft scheduled on 07, 08 Oct 21 from 0130 TO 1130 UTC in danger area bounded within 12-49N TO 12-59N and 080-46E to 081-26E. Wide berth from area advised.</p> <p>2. Cancel this MSG 081230 UTC Oct 21.</p>
<p>682. Andaman Sea - off Barren I. Charts IN 41 473 INT 7031. Firing by CG aircraft scheduled ON 07, 08 OCT 21 from 0330 to 0930 UTC in danger area bounded within 11-50N TO 12-00N and 093-40E to 094-10E.Wide berth from area</p> <p>682 (continued).</p>

advised.
2. Cancel this MSG 081030 UTC Oct 21.
683. India East Coast - off Visakhapatnam. Charts IN 31 391 7706 INT 706. Firing scheduled from 082330 to 090430 UTC, 091130 to 091630 UTC and 092330 to 100430 UTC OCT 21 in danger area bounded by 16-13.15N 084-11.7E, 15-03.88N 083-01E, 13-53.17N 084-10.27E, 15-02.43N 085-21E. Wide berth from area advised.
2. Cancel this MSG 100530 UTC Oct 21.
684. India West Coast - off Mormugao. Charts IN 22 214 215 257 293 2020 2022 2078 INT 7343. Firing Scheduled on 08 Oct 21 from 0330 to 0730 UTC in danger sector of 15 NM between bearing 220 and 260 from 15-24.7N 073-47.05E. Wide Berth from area advised.
2. Cancel this MSG 080830 UTC Oct 21.
685. Cancel NAVAREA VIII MSG 669/21, 679/21 and this MSG
686. India East Coast - off Balasore. Charts IN 31 351 352 3017 INT 756. Experimental flight trial scheduled on 07, 08 Oct 21 from 0430 to 0630 UTC and 0830 to 1030 UTC in danger area bounded by 21-22.6N 086-56.32E, 21-21.98N 086-55.86E, 21-19.15N 086-54.48E, 21-06.95N 086-51.63E, 20-46.53N 087-07.2E, 20-18.66N 087-20.56E, 18-57.41N 086-46.86E, 19-03.33N 087-47E, 20-19.11N 088-18.4E, 21-28.55N 087-07.91E. Wide berth from area advised.
2. Cancel this MSG 081130 UTC Oct 21.
687. India East Coast. Charts IN 31 355 391 INT 7405. Rig Move. DDKG 1 (16-32.22N 082-33.51E). Refer to 184(T) of INTM 19/21. Wide berth requested.
688. Indian Ocean. Charts IN 22 7706 INT 706. MSV Annai Vailankanne Arockia Vennila reported flooding and abandoned in approximate position 06-18.2N 076-44.1E. Crew rescued. Vessels transiting to exercise caution.
689. India East Coast - off Visakhapatnam. Charts IN 31 391 7706 INT 706. Firing scheduled from (A) 082330 to 090430 UTC (B) 091130 TO 091630 UTC (C) 092330 TO 100430 UTC (D) 101130 TO 101630 UTC Oct 21 in danger area bounded by 16-13.15N 084-11.7E, 15-03.88N 083-01E, 13-53.17N 084-10.27E, 15-02.43N 085-21E. Wide berth from area advised.
2. Cancel NAVAREA VIII MSG 683/21 and this MSG 101730 UTC Oct 21.
690. India West Coast - off Kochi. Charts IN 220 259 2004 INT 7359. Fishing boat reported sunk in approximate position 09-58.23N 076-13.2E at 050408 UTC Oct 21.
691. India West Coast - off Mormugao. Charts IN 22 214 215 257 293 INT 752. Firing scheduled from 100230 to 131430 UTC OCT 21 in danger area bounded by 14-15N 072-52E, 14-20N 071-52E, 15-30N 071-48E, 16-09N 072-44.5E, 15-17N 073-21E. Wide berth from area advised.
2. Cancel this MSG 131530 UTC Oct 21.
692. India West Coast - off Porbandar. Charts IN 202 204 205 252 271 291 292 INT 7325. IAF firing from Kathiawar range scheduled on 09, 11, 12 Oct 21 from 0330 to 1030 UTC in danger area bounded by 22-12N 068-36.33E, 21-15.5N 069-04E, 21-09N 069-40E, 21-15.5N 069-42.5E, 22-05.75N 068-49E. Wide berth from area advised.
2. Cancel this MSG 121130 UTC Oct 21.
693. Cancel NAVAREA VIII MSG 686/21 and this MSG
694. India East Coast - off Balasore. Charts IN 31 301 351 INT 7419. Firing by CG aircraft scheduled on 11, 12, 14, 18, 20, 22, 26, 28 OCT 21 from 0430 to 1030 UTC in danger area bounded within 20-37N TO 20-52N and 088-30E to 089-00E. Wide berth from area advised.
2. Cancel this MSG 281130 UTC Oct 21.
695. India West Coast - off Mumbai. Charts IN 21 211 255 292 INT 7334. ACOMS 11 progressing survey in areas bounded by (A) 18-49.2N 072-09.48E, 18-48.8N 072-28.66E, 18-40.35N 072-28.49E, 18-40.68N 072-09.32E (B) 19-42.47N 070-45.39E, 19-41.66N 071-47.37E, 18-55.08N 071-46.56E, 18-55.91N 070-44.9E. Wide berth requested.
2. Cancel this MSG 281830 UTC Oct 21.
696. India West Coast. Charts IN 211 255 292 INT 7334. Rig move. CE Thronton (18-32.97N 072-18.52E). Refer to 186(T) of INTM 19/21. Wide berth requested.
697. Sri Lanka West Coast - off Colombo. Charts IN 32 263 INT 7383. Submerged boat reported adrift in approximate position 07-32.04N 079-37.08E on 08 OCT 21.
2. Cancel this MSG 111000 UTC Oct 21.
698. Indian Ocean. Charts IN 22 32 7706 INT 706. Hydrographic survey being progressed in areas bounded by (A) 07-00N 075-22E, 06-48N 075-25E, 06-00N 076-02E, 06-00N 077-50E, 06-12N 078-00E, 07-00N 078-00E, 07-00N 075-22E (B) 06-54N 076-00E, 06-54N 076-32E, 07-35N 076-32E, 07-35N 076-46E, 07-59.5N 076-46E, 07-59.5N 076-00E. Wide berth requested.
2. Cancel this MSG 151830 UTC Nov 21.
699. NAVAREA VIII - warnings in force as on 08 Oct 2021:- 2020 SERIES - 333 384 442 593 630 690 691 751 757 2021 SERIES - 017 147 286 340 361 387 392 411 420 433 434 447 463 478 479 480 491 493 494 500 528 540 544 550 601 604 606 614 627 629 633 642 644 652 658 660 664 667 671 674 677 687 688 689 690 691 692 694 695 696 697 698 (A) NAVAREA VIII WARNINGS less than 42 days promulgated via safety net 699 (continued).

(B) Text of NAVAREA VIII warning inforce including those which no longer broadcast available in www.hydrobharat.gov.in 2. Cancel this MSG 141000 UTC Oct 21.
700. Andaman Sea. Charts IN 41 472 473 7706 INT 757. Firing scheduled from 09 to 16 Oct 21 from 0030 to 0730 UTC in danger area bounded by 11-40N 094-25E, 08-00N 094-25E, 08-00N 095-35E, 09-37.97N 095-34.87E, 10-17.99N 095-15.98E, 10-27.84N 095-14.92E, 10-44N 095-21.98E, 11-40N 095-25.68E. Wide berth from area advised. 2. Cancel This MSG 160830 UTC Oct 21.
701. India West Coast. Charts IN 214 257 2046 INT 7343. Vengurla NAVTEX transmitter will be switched off for maintenance.
702. Andaman Sea - off Barren I. Charts IN 41 473 INT 7031. Firing by CG aircraft scheduled on 14, 15 OCT 21 from 0330 to 0930 UTC in danger area bounded within 11-50N to 12-00N and 093-40E to 094-10E. Wide berth from area advised 2. Cancel this MSG 151030 UTC Oct 21.
703. India West Coast - off Porbandar. Charts IN 21 204 205 252 271 292 INT 7325. Firing by CG aircraft scheduled on 15, 18 Oct 21 from 0300 to 0915 UTC in danger area bounded by 21-32N 069-24E, 21-12N 069-24E, 21-14N 069-05E, 21-32N 068-56E. Wide berth from area advised. 2. Cancel this MSG 181015 UTC Oct 21.
704. Cancel NAVAREA VIII MSG 627/21 and this MSG.
705. India West Coast - off Bhatkal. Charts IN 22 216 257 294 2356 INT 7343. Firing scheduled on 18, 20, 21 Oct 21 from 0230 to 1130 UTC in danger area bounded by 14-01.05N 074-27.57E, 13-51.05N 074-27.57E, 13-51.05N 074-07.57E, 14-11.05N 074-07.57E, 14-09.05N 074-22.57E. Wide berth from area advised. 2. Cancel this MSG 211230 UTC Oct 21.
706. Indian Ocean - off Reunion I. Charts IN 7702 BA 712 INT 702. Marion Dufresne progressing scientific survey in areas bounded by (A) 21-22.21S 055-12.08E, 21-18.36S 055-15E, 21-20.73S 055-18.93E, 21-24.53S 055-15.36E (B) 21-15.97S 055-49.6E, 21-11.86S 055-57.82E, 21-13.09S 055-58.99E, 21-17.11S 055-50.17E (C) 20-56.63S 055-55.4E, 20-56.21S 055-59.18E, 20-59.12S 055-59.6E, 20-59.47S 055-55.58E. Wide berth requested. 2. Cancel this MSG 221830 Oct 21.
707. India East Coast - off Balasore. Charts IN 31 301 351 3017 3038 INT 756. IAF exercise scheduled from 20 to 23 Oct, 25 to 30 Oct 21 from 0430 to 0630 UTC and 0830 to 1030 UTC in danger area bounded by (A) 21-41N 087-44E (B) 20-57N 086-53E (C) 20-56N 086-55E (D) 21-02N 087-13E (E) 20-56N 087-16E (F) 20-47N 087-02E (G) 20-48N 086-56E (H) 20-12N 087-19E (J) 20-00N 087-59E (K) 20-35N 087-40E (L) 21-24N 087-38E. danger area extending upto coastline joining point A and B. Wide berth from area advised. 2. Cancel this MSG 301130 UTC Oct 21.
708. India East Coast - Visakhapatnam. Charts IN 31 32 308 354 391 3002 3012 INT 7410. Firing scheduled on 20 OCT 21 from 0001 to 0130 UTC in danger area bounded by (A) 17-42N 083-18E (B) 17-48N 083-35E (C) 17-31N 083-32E and arc of 17 NM radius joining point B and C. Wide berth from area advised. 2. Cancel this MSG 200230 UTC Oct 21.
709. India East Coast - off Chennai. Charts IN 32 313 356 357 391 INT 7400. Firing by CG aircraft scheduled on 21, 22 Oct 21 from 0130 to 1130 UTC in danger area bounded within 12-49N to 12-59N and 080-46E to 081-26E. Wide berth from area advised. 2. Cancel this MSG 221230 UTC Oct 21.
710. India West Coast - off Porbandar. CHARTS IN 21 204 205 252 271 292 INT 7325. Firing by CG aircraft scheduled on 22, 25 OCT 21 from 0300 to 0915 UTC in danger area bounded by 21-32N 069-24E, 21-12N 069-24E, 21-14N 069-05E, 21-32N 068-56E. Wide berth from area advised. 2. Cancel this MSG 251015 UTC Oct 21.
711. Andaman Sea - off Barren I. Charts IN 41 473 INT 7031. Firing by CG aircraft scheduled on 21, 22 OCT 21 from 0330 to 0930 UTC in danger area bounded within 11-50N to 12-00N and 093-40E to 094-10E. Wide berth from area advised 2. Cancel this MSG 221030 UTC Oct 21.
712. India West Coast - Off Sikka. CHARTS IN 203 2083 INT 7319. Hydrographic Survey Being Progressed In Area Bounded Within 22-23N to 22-43N and 069-44E to 069-58.8E. Wide Berth requested. 2. Cancel this MSG 271830 UTC Oct 21.
713. NAVAREA VIII - warnings in force as on 14 Oct 2021 2020 SERIES - 333 384 442 593 630 690 691 751 757 2021 SERIES - 017 147 286 340 361 387 392 411 420 433 434 447 463 478 479 480 491 493 494 500 528 540 544 550 601 604 606 614 629 633 642 644 658 660 664 667 671 674 677 687 688 690 694 695 698 700 701 702 703 705 706 707 708 709 710 711 712 (A) NAVAREA VIII warnings less than 42 days promulgated via safety net (B) Text of NAVAREA VIII warning inforce including those which no longer broadcast available in www.hydrobharat.gov.in 2. Cancel this MSG 221000 UTC Oct 21

SECTION – VI
CORRECTIONS TO SAILING DIRECTIONS (PILOTS)

West Coast of India Pilot (INP-1)

Chapter - 4 (Page 162)

(Source: ROS, INS Nirupak)

Article 4.12, para 2, delete and replace by:

2 A 75 m long jetty with depth upto 02 mtrs alongside for berthing of fishing boats is available. Local knowledge is required for approach to jetty and berthing alongside.

Article 4.13, para 2, line 1, delete and replace by:

2 A 75 m long jetty with depth upto 02 mtrs alongside for berthing of fishing boats is

SECTION – VII
CORRECTIONS TO LIST OF LIGHTS

No	Name & Location	Position (Lat-Long)	Character istics	Ht. (mts)	Range (miles)	Structure & Height (mts)	Remarks
F0426	- Nawabandar. W Entrance Point	20 44.44 N 71 04.80 E	Fl(4)W 12s	27	16	White round tower	(fl 0.8, ec 1.2) x 3, fl 0.8, ec 5.2
F0600	Vengurla Point	15 51.32 N 73 36.89 E	Fl R 5s	82	24	White 6-sided masonry tower, black bands 13	fl 0.3. Storm Signals
-	-	..	AIS	MMSI No 004192233
F1560.5	- E side. Muroh	04 13.33 N 100 35.10 E	F R	11	5	Red □ on white column on pile platform	TE 2021
F1560.9	PORT LUMUT. SUNGAI MANJUNG (SUNGAI DINDING) - Lloyd Rock	04 15.44 N 100 35.09 E	Q R	10	8	Red □ on white column on piles	TE 2021

SECTION – VIII
CORRECTION TO LIST OF RADIO SIGNALS

INP 31(1), 2019

(Last correction: Edition No. 15 dated 01 Aug 2021)

NIL

INP 31(2), 2019

(Last correction: Edition No. 15 dated 01 Aug 2021)

NIL

INP 31(5), 2017

(Last correction: Edition No. 14 dated 16 Jul 2021)

NIL

INP 31(6), 2018

(Last correction: Edition No. 19 dated 01 Oct 2021)

**PAGE 213, UNITED ARAB EMIRATES, KHALIFA PORT (MINAKHALIFA),
PROCEDURE, section (6).**

Delete entry and replace by:

(6) Pilot boards in the following positions:

- (a) Outer (A): 24°57'·00N 54°33'·40E (Deep Water (DW) boarding place for the maximum permissible deep draught vessels and for any other vessels regardless of size and type)
- (b) Inner (B): 24°54'·00N 54°38'·20E (Other vessels depending on type, draught, LOA, weather and tide conditions)

SECTION – IX

REPORTING OF NAVIGATIONAL DANGERS

Appeal to all Mariners

1. Mariners at sea whilst on passage, or whilst entering / leaving ports / Harbour and other waterways, are requested to look out for new or suspected dangers to navigation, changes in aids to navigation, or corrections to published charts and Sailing Directions. Whenever any such changes / dangers are observed, mariners are requested to notify the same to the Chief Hydrographer to the Government of India at the following address: -

National Hydrographic Office
 107-A, Rajpur Road,
 Dehradun - 248001
 (Uttarakhand), India
 e-mail : msis-inho@navy.gov.in, inho@navy.gov.in
 Fax No. : +91-135- 2748373
 Web : www.hydrobharat.gov.in

Instructions for filling up IH 102

2. Kindly follow the instructions below in order to help the Hydrographic Office (the recipient) to quickly issue NAVAREA warning / Notice to Mariners for the benefit of all other mariners at sea.

Position Reporting

3. Accurate position or knowledge of position error is of great importance. Latitude and Longitude should only be used to specify position details when they have been fixed by GPS or Astronomical Observations. A full description of the method, equipment, time and datum (WGS 84/ Everest/Other) used should be given. When position is defined by sextant angles or bearings (true or magnetic to be specified), more than two bearings should be used in order to provide a redundancy check. Distances observed by Radar should be corrected for index errors. Where position is derived after the event, from other observations and/or Dead Reckoning, the methodology of deriving the position should be included.

4. Paper Charts. A copy/tracing of largest scale chart is the best medium for forwarding details, the alterations and additions being shown thereon in red, but adequate details from the chart must be traced in black ink to enable the amendments to be fitted correctly.

5. ENCs. A Screen shot of largest scale usage band ENC with the alterations and additions being shown thereon in red. If it is to report an issue with the display of an ENC, a screen shot of the affected cell should be sent along with details of the ECDIS make and version in use at the time.

Depth Reporting

6. When soundings are obtained using echo sounders, the echo sounding trace should be duly annotated with date, times, position, depths, etc., and forwarded with the IH102. It is important to state whether the echo sounder is set to register depths below the surface or below the keel; in the latter case the vessel's draught should be given. Time and date should be given in order that corrections for the height of the tide may be made where necessary. The make, name and type of echo sounder should also be given.

7. For modern echo sounders that use electronic 'range gating', care should be taken that the correct range scale and appropriate gate width are in use. Older electro-mechanical echo sounders frequently record signals from echoes received back after one or more rotations of the stylus have been completed. Thus with a set whose maximum range is 500m, an echo recorded at 50m may be from depths of 50m, 550m or even 1050m. Soundings recorded beyond the set's nominal range can usually be recognised by the following:

- (a) The trace being weaker than normal for the depth recorded;
- (b) The trace passing through the transmission line;
- (c) The feathery nature of the trace.

As a check that apparently shoal soundings are not due to echoes received beyond the set's nominal range, soundings should be continued until reasonable agreement with charted soundings is reached. However, soundings received after one or more rotations of the stylus can still be useful and should be submitted if they show significant differences from the charted depths. Efforts should be made to identify and negate false echoes if any. The Mariners Handbook (NP100) and Notice 15 Special Edition of Notice to Mariners may be consulted.

8. Reports which cannot be confirmed or are lacking in certain details should not be withheld. Shortcomings should be stressed and any firm expectation of being able to check the information on a succeeding voyage should be notified.

9. Reports of **shoal soundings**, uncharted dangers and aids to navigation out of order should, at the mariner's discretion, also be made by radio to the nearest coast radio station. The draught of modern tankers in such that any uncharted depth under 30 meters or 15 fathoms may be of sufficient importance to justify a radio message.

10. Changes to Port information should be forwarded on Form IH.102A together with form IH.102. Form 102A contains the information required for Sailing Directions and should be used as an *aide memoir*. The Mariners Handbook, NP100, Chapter 8 gives general instructions. Where there is insufficient space on the forms an additional sheet should be used.

Please Note: - An acknowledgement will be sent by National Hydrographic Office for Hydrographic Notes, on receipt. When a Notice to Mariners is issued, the sender's ship or name is quoted as authority unless the information is also received from other authorities/ foreign Notices to Mariners. Further, communication from National Hydrographic Office to the sender of Hydrographic Notes will only be necessary to verify unusual features or abnormal values reported.

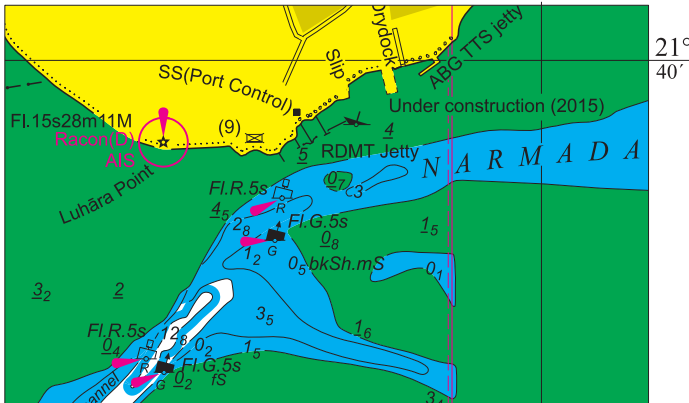


HYDROGRAPHIC NOTE		IH.102 (Revised 2012)	
For Forwarding information for Indian Charts, ENC's and Publications and reporting of ENC related issues			
Date		Ref. Number	
Name of the Ship or Sender			
Address			
Tel/FAX/E-mail address			
Observation Date		Time (UTC/IST)	
Object of Changes Observed (Tick appropriate)	<input type="checkbox"/> Bathymetry	<input type="checkbox"/> Nav. Dangers	<input type="checkbox"/> Nav. aids
	<input type="checkbox"/> Designated Areas	<input type="checkbox"/> Others	
Geographical Position (See Instructions Overleaf)	Latitude		Longitude
Position Method	<input type="checkbox"/> DGPS	<input type="checkbox"/> GPS	<input type="checkbox"/> Radar <input type="checkbox"/> Others
Datum Used	<input type="checkbox"/> WGS84	<input type="checkbox"/> Everest	<input type="checkbox"/> Others
Charts Affected		Edition	
Latest Edition of Indian Notices to Mariners Held			
Tracing/Plot/Photograph if enclosed			
ENCs Affected			
Latest Update Disk Held			
Publication Affected		Edition	
Page No./Light No. etc			
Details:			
Limitations if any in Reporting the Changes Above			
Details of Documents/Photos attached:			
Signature of the Master/Reporter/Observer			

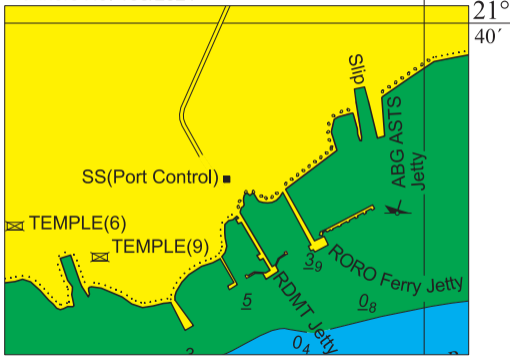
HYDROGRAPHIC NOTE FOR PORT INFORMATION (To accompany Form IH.102)		IH.102A (Revised 2012)	
Date		Ref. No.	
Name of the Ship or Sender			
Address			
Tel/Fax/E-mail			
1. NAME OF PORT			
Location	Latitude		Longitude
2. GENERAL REMARKS			
Principal activities and trade			
Number of ships and tonnage handled per year			
Maximum size of draught of vessel handled			
Copy of Port handbook (if available)			
3. ANCHORAGES			
Type / Purpose			
Minimum depth at anchorage			
Shelter afforded			
Holding ground			
Recommended pilotage to the anchorage			
4. PILOTAGE			
Authority for request			
Embarkation position			
Regulations			
Documents to be provided			
Recommended pilotage to approach of Harbour and Berths			
Information on VTMS			
5. DIRECTIONS			
Entry and Berthing Information			
Tides (Height)			
Tidal Stream Information			
Wind Speed and Direction			
Navigational Aids (Beacons / Buoys / Lights / Etc.)			
6. POLLUTION CONTROL			
Local regulation in force (If Any)			
7. TUGS			
Number available / Tug type			
Maximum HP / Bollard pull			

7. TUGS (Continued)	
Requesting authority	
Availability timing / Communication	
Hiring charges	
8. BERTHING AND WHARVES	
Type & Number of berths available	
Length	
Depth alongside	
Facilities available	
Procedure for requesting berth & hiring charges	
9. CARGO HANDLING	
Containers	
Lighters & Ro-Ro etc.	
10. CRANES	
Brief details of Max. lifting capacity, Height of boom at wharf level and Outreach	
Container handling facilities	
11. BRIDGES	
Vertical clearance	
12. REPAIRS	
Hull machinery and underwater	
Ship and Boat yards	
Docking or Slipway facilities (Size/ Dimensions of vessels handled)	
Hards and Ramps	
Divers / Diving assistance	
13. SERVICES	
Radio / FAX / Telephone / Internet etc.	
Medical	
Quarantine	
Consul	
Ship chandlery and Stevedores	
Compass adjustment	
Tank cleaning	
Hull painting	
Police / Ambulance / Firefighting (Fixed and Mobile facilities)	
Nav. Warning and Weather bulletin	
Garbage disposal / Waste oil disposal	
Helicopter landing facilities	

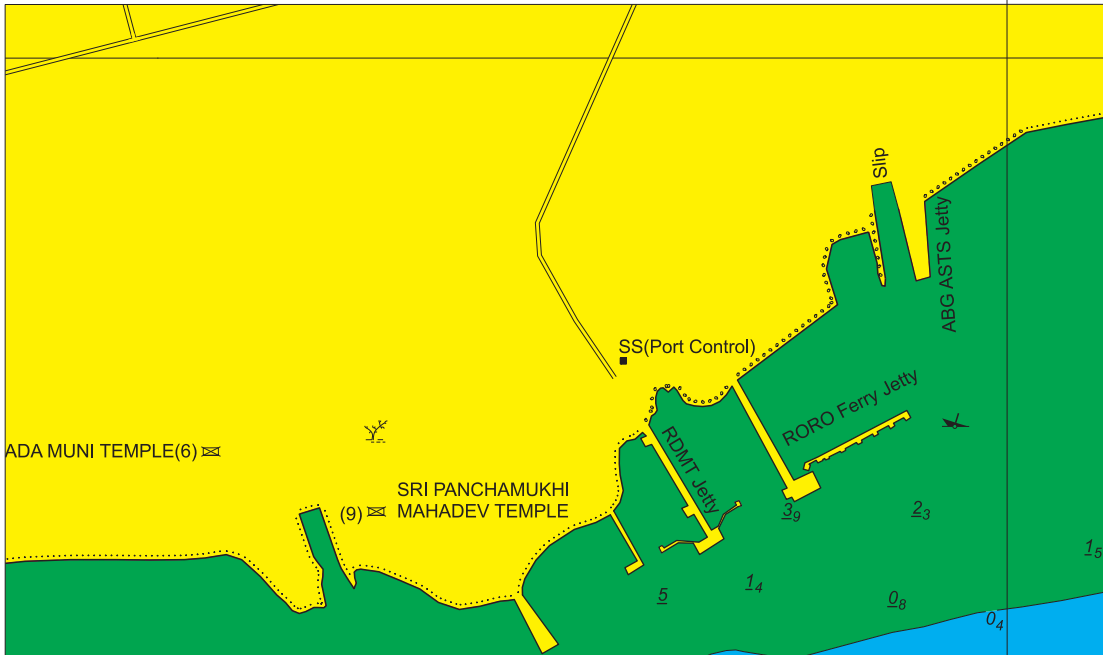
14. RESCUE & DISTRESS	
Salvage, Lifeboat, Life guards, etc	
15. SUPPLIES	
Fuel (Type, Quantities & Method of delivery)	
Fresh water (Method of delivery and Rate of supply)	
Provisions	
Chart agents	
16. COMMUNICATIONS	
Road, Rail and Air services available	
Nearest airport or airfield	
Port Radio and Information Service (Frequencies and Operating Hours)	
17. PORT AUTHORITY	
Designation, Address, Telephone, E-mail Address and Website	
18. SECURITY	
Security of ports / International Ship and Port Facility Security (ISPS) compliance	
Custom and Immigration Regulations in force	
19. SMALL CRAFT FACILITIES	
Information and facilities for small craft, yachts visiting the port	
Yacht clubs, berths etc	
20. SHORT LEAVE	
21. CLUBS RECREATION	
Information Kiosk (Location)	
Foreign Exchange firms / Banks (Within / Near Port Area)	
Places of interest near port	
22. VIEWS	
Photographs(Duly annotated) of the approaches, leading marks, the entrance to the harbour etc.	
23. ADDITIONAL DETAILS	
Any other information considered to be useful for the mariners	
SIGNATURE OF THE OBSERVER / REPORTER / MASTER	



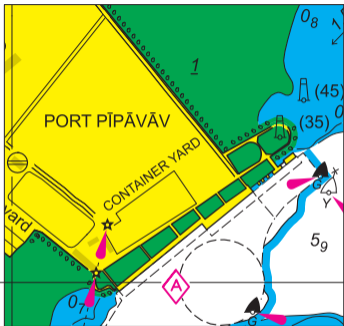
To accompany Indian Notices to
Mariners No. 188/2021



Block correction for chart No. 2082



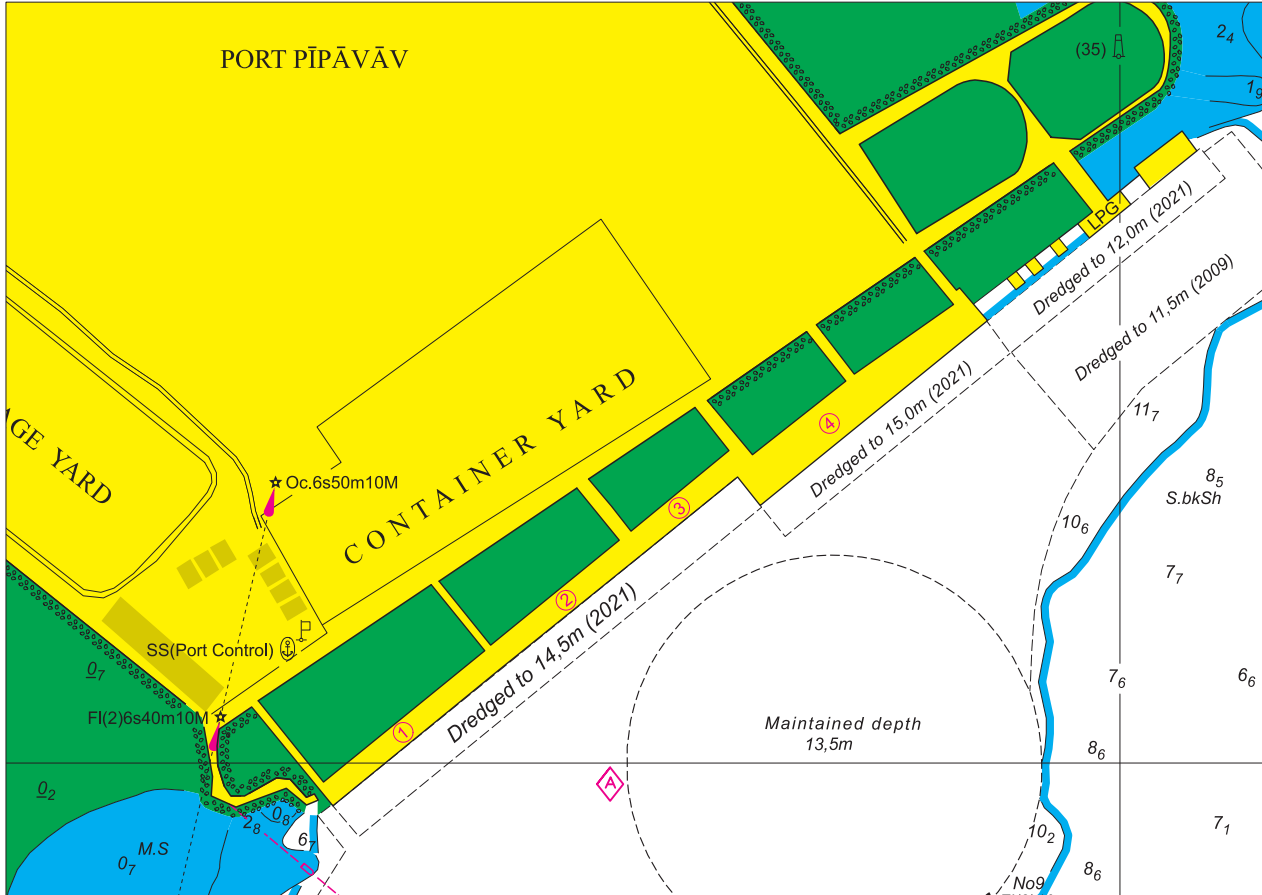
To accompany Indian Notices to
Mariners No. 189/2021



Block correction for chart No. 2100

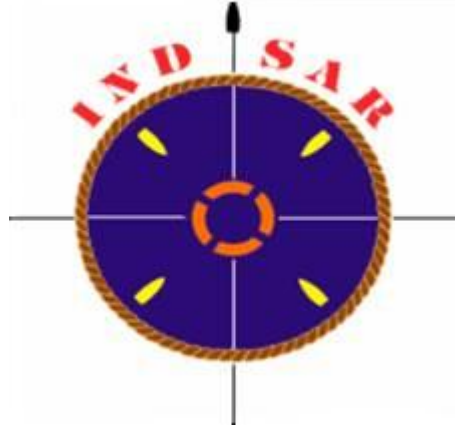
20°
55'

71°30'



Block correction for chart No. 2100 (PLAN)

71°31'



FOR 24 X 7 SAR ASSISTANCE IN INDIAN SRR

Email: mrcc-west@indiancoastguard.nic.in

NATION WIDE SAR TELE: 1554 (LAND LINE)

INMARSAT C (IOR) 441907210 CODE: 43 (TOLL FREE)

AFTN: VABBYXYC